

**ERATE 470 FORM # ___745890001286396___ REQUEST AND
REQUEST FOR PROPOSAL (RFP) FOR:
NETWORKING EQUIPMENT
Nebraska Unified District #1
Clearwater-Orchard Public School Clearwater Building Site**

NEBRASKA UNIFIED DISTRICT #1, Clearwater Orchard Public School – Clearwater Site [Which will now be called COPS] is seeking proposals for the upcoming Funding Year 15-16 round of E-Rate. COPS is soliciting proposals for the purchase and installation of network electronics. All services are to be completed within the guidelines and regulations for local, state, and the federal E-rate program.

SERVICES REQUESTED:

• Network Switches, Wireless Access Points, Wireless Controller, Ethernet and Fiber Network Cabling, Caching Server, UPS, and Equipment Racks.

The RFP reflects the current proposed services requested on the Erate 470 forms. The proposal embodies the Nebraska Unified District #1, Clearwater-Orchard Public School -- Clearwater Building Site, 501 Iowa Street, Clearwater, NE 68726.

COPS - Clearwater Site has two buildings, the main educational center and the Industrial Technology Building, These buildings house about 27 classrooms, multiple computer labs, a gymnasium, multiple commons areas, and a library. These two buildings are connected via a fiber optic cable. Network electronics and cabling will be installed in both buildings.

There is 1 Main Distribution Frame (MDF) located in the Mechanical room of the main building which also houses the telco demarcation, while the 1 Intermediate Distribution Frame (IDF) is located behind the Server/Media Library in the main building. They are connected via copper Ethernet. The Internet connection to our present router is via Fiber Optic cable.

The successful bidder(s) will be responsible for qualifying for and adhering to the Federal E-Rate program. Items not eligible for E-Rate must be itemized in the bid. Prices must be held firm for the duration of the E-Rate Year. These projects and services depend on partial funding from the E-rate program and should be completed within the funding year.

- Applicant expects each Service Provider to make themselves thoroughly familiar with any rules or regulations regarding the E-rate program.
- All contracts entered into as a result of this RFP will be contingent upon the specific funding of the FRN at the percentage rate submitted.
- The maximum percentage the Applicant will be liable for is the pre-discount amount minus the funded amount or ineligible portion as shown on the form 471 Block 5.
- In the event of questions during the E-Rate PIA review process, the successful vendor is expected to reply within 3 days to questions associated with their proposal.
- The contractor is responsible for providing a valid SPIN (Service Provider Identification Number) at the time the bid is submitted.
- Any potential bidder found to be in Red-Light Status will be disqualified from participation in the bidding process and will be considered non-responsive.
- Vendor understands that they may be asked to work around school schedules to avoid impacting classroom or busy office times.

The Applicant reserves the right to deny any or all proposals associated with this RFP, even with SLD funding approval. Applicant reserves the right to consider existing piggyback, open RFP, open 470, etc....

Failure to follow the above criteria and requirements may be considered grounds for disqualification.

Proposals must be addressed to our office location noted below. All on-site walkthroughs are required to be scheduled on Mondays and Wednesdays between the hours of 9:00 am and 3:00 pm. Proposals are required to be submitted by end of February, 2015.

Technology Coordinator
Clearwater-Orchard Public School -- Clearwater Building Site
501 Iowa Street
PO BOX 38
Clearwater, NE, 68726
Telephone: 402-485-2505

PROJECT

This proposal shall be broken down into two options:

1. Full proposal (hardware and labor) to include:

- a) Vendor to propose and coordinate configurations with WBPS prior to installation, in order to provide a "turn-key" delivery.**
- b) Install the specified network electronics equipment into provided or project included wall mounted or freestanding electronic equipment racks.**
- c) Install specified plenum cabling (CAT-6 and fiber optics) and related equipment into provided or project included wall mounted or freestanding electronic equipment racks. All cabling includes required ends.**
- d) Perform power-on system and functionality tests.**
- e) Perform and demonstrate a verification of network connectivity and functionality.**
- f) Verify access to the Internet and to WBPS resources.**
- g) Provide documentation listing all equipment, part numbers, quantities, serial numbers, IP addressing and equipment naming.**
- h) Provide proposed coverage map and post install verification of coverage.**
- i) Provide necessary training.**
- j) Provide two year maintenance agreement on qualifying equipment.**

2. Equipment and installation separately per equipment listed (ie. AP plus installation or switches plus installation) to include:

- a. Delivery of each component to its designated secured location.**
- b. Provide documentation listing all equipment, part numbers, quantities, and serial numbers.**
- c. Provide two year maintenance agreement on qualifying equipment.**

HARDWARE EQUIPMENT

WIRELESS ACCESS POINT EQUIPMENT:

Each wireless access point should have a dual radio (antenna) design. Each access point should be able to provide at minimum 802.11a/b/g/n standards within the 2.4GHz and 5GHz bands. Each access point should have at least one gigabit uplink port. Each access point should be able to provide 4 or more BSSID. Each access point should have the ability to be managed by a central system. Each access point should be compatible with current system unless all equipment is to be replaced. There should be at least one access point per room planned.

WIRELESS CONTROLLER SYSTEM EQUIPMENT:

The controller should be able to contact and control all currently or newly installed equipment.

NETWORK CABLING EQUIPMENT:

All network wire should be Category 6 rated or better with compliant Category 6 accessories used. Installed should be a minimum of two cables per access point location. All cable runs should be terminated independently in a female connection form factor at each wireless access point location. The color should be white. If not already installed, fiber should be installed between distribution frames for network backbone purposes. The fiber should be at minimum 3 pair in size and 10 Gigabit capable rated or better with compliant 10 Gigabit accessories used. If fiber is already installed but not 10 Gigabit rated, it should be replaced or supplemented with additional fiber that is 10 Gigabit rated.

NETWORK SWITCHING EQUIPMENT:

Must have such design to integrate seamlessly with existing head-end and downstream equipment. All distribution frames must have port density and fiber connectivity to support all backbone connections and current or newly terminated connections. All switches must provide at minimum 48 RJ45 Gigabit ports, 2 SFP+ ports, 802.3af/at PoE+ capabilities, and 740W or more total power.

CACHING EQUIPMENT:

Equipment must be able to provide a caching service for iOS updates for more than 100 iOS devices with a minimum of 1TB hard drive space.

UPS (UNINTERRUPTABLE POWER SUPPLY) EQUIPMENT:

Each distribution frame location must have a UPS with enough capacity to provide at least 30 min of runtime at the current equipment load.

RACK EQUIPMENT:

Rack equipment should support all proposed or current equipment. Depending on location will dictate size, form factor, and installation requirements.

MAINTENANCE:

Two year maintenance on installed components.

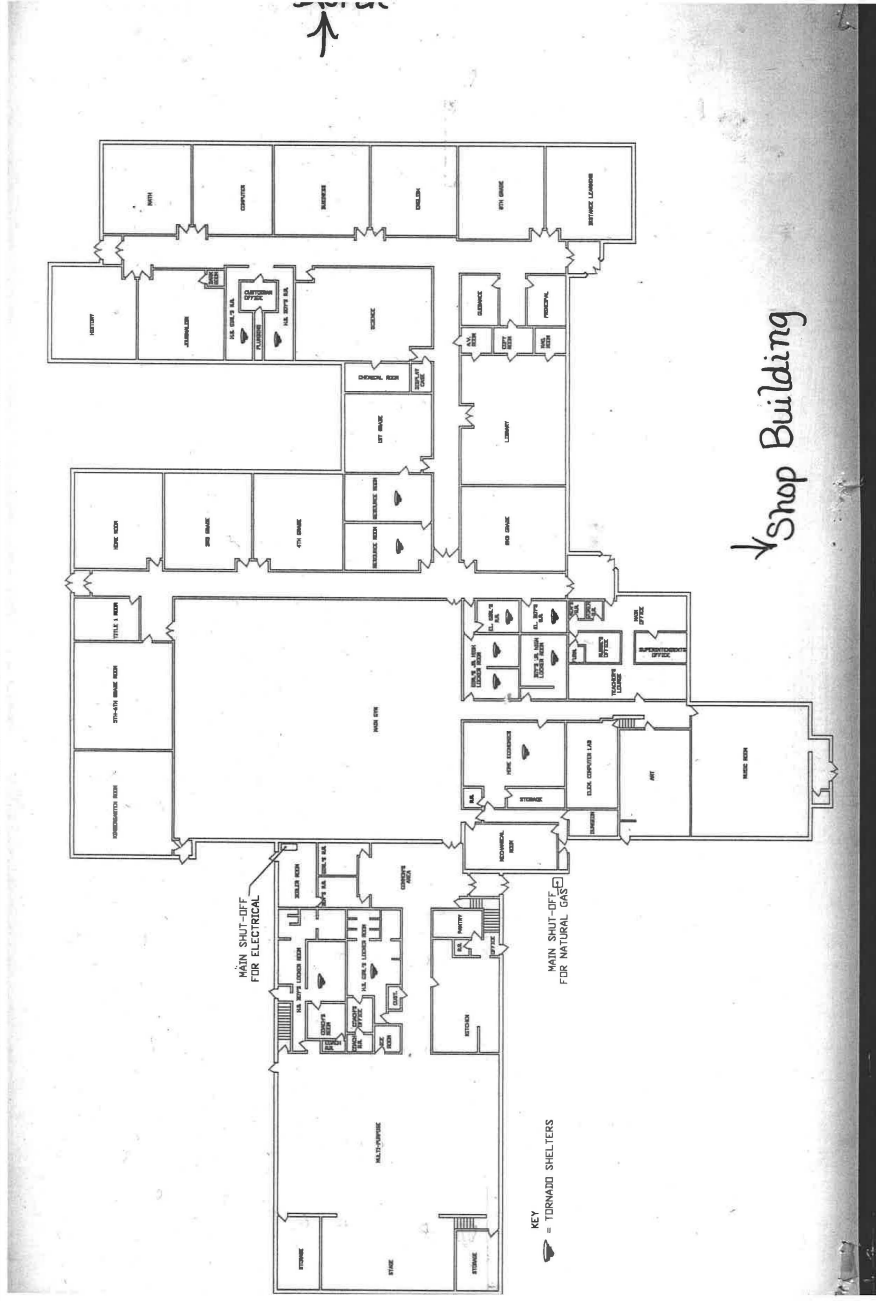
Evaluation Procedures

The evaluation will be performed by the RFP Coordinator and evaluation staff for services proposed. The evaluators will consider how well the vendor's proposed solution meets the needs and criteria set forth in the fair and competitive bidding process using the below matrix. It is important that bids be itemized, clear, and complete so that the evaluators can adequately understand all aspects of the proposal. Evaluation results are confidential and the property of COPS

Evaluation Scale:

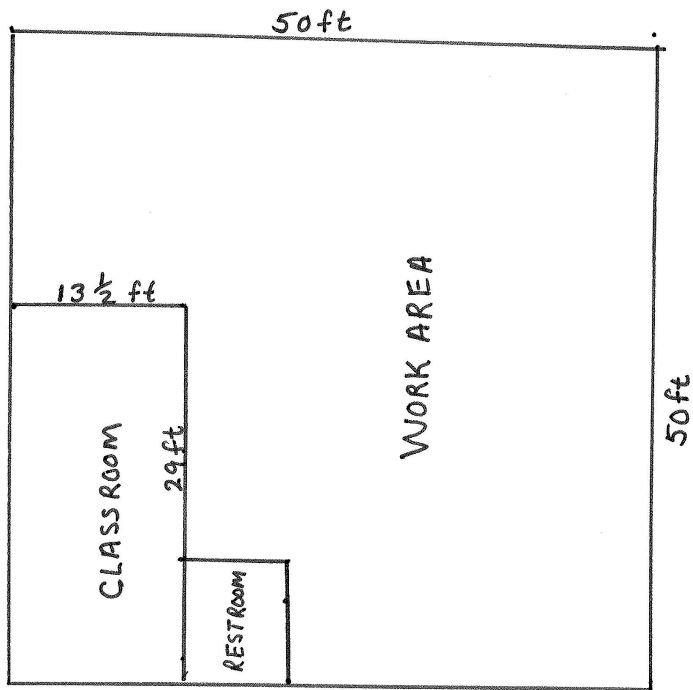
Factor	Weight
Price of Eligible Goods and Services	25%
Prior Experience	20%
Walkthrough	15%
Qualifications	10%
Deviance from RFP Specifications	10%
Distance from District	10%
Billing Methods	5%
E-rate Experience	5%

Clearwater Orchard Public School—
 Clearwater Building Site
 Main Building
 Floor Plan



Clearwater Orchard Public School—

Clearwater Building Site
Industrial Tech Building
Floor Plan



CLEARWATER ORCHARD
Industrial Tech Building

Appendix A: Equipment List

wireless network upgrade including installation, configuration and training	school wireless network to support 400 or more devices
dual radio wireless access points	gigabit uplink or better; compliant at minimum with 802.11 a/b/g/n standards; 30 or more ; 2 buildings
wireless access controller	to manage existing and new wireless access points in 2 buildings
PoE managed network switches	4 or more; 10 gigabit or better
caching server for IOS updates	100 + devices
UPS	2 or more at 1300 w to provide at least 30 minutes runtime
upgrade network cable to access points	CAT 6 cable to 30 or more access points; 2 cables per access point
CAT 6 patch panels	quantity necessary to support CAT 6 cabling for access points
fiber optic cabling	10 gigabit or better between distribution frames
rack equipment	6U or better
Maintenance	
hardware and software maintenance for wireless system	two year
hardware and software maintenance for switches	two year